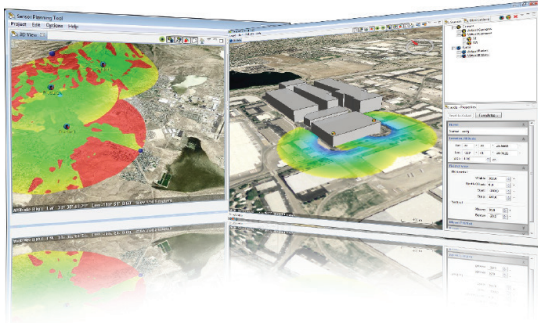




## SPOT™: Sensor Placement & Optimization Tool



Persistent Sentinel's SPOT software enables security operators to quickly assess the effectiveness of existing or proposed sensor systems. Using a combination of elevation data and customizable 3D models, SPOT calculates sensor coverage areas and presents color-coded results on a geographic information system (GIS) display. This enables site planners to virtually place sensors, assess a variety of sensor combinations, and create a design that eliminates blind spots.

SPOT is customizable and compact enough to run on a laptop. It can be used to create simple 3D models representing buildings, vegetation, and other obstructions. Once the obstructions have been created, a site planner can use the software to determine the overall effectiveness of the sensor network.

### Key Features

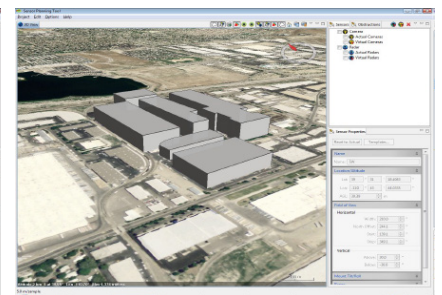
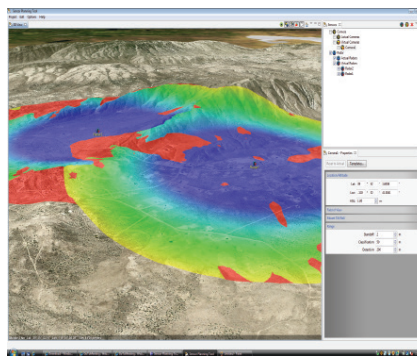
- Line-of-Site coverage calculations
- Customizable sensor templates for defining sensor standoff, detection and classification ranges
- Custom obstruction creation including buildings, vegetation, and other obstacles
- Efficient report generation with color-coded results

### Sensor Inputs

- Radars
- Unattended Ground Sensors
- Sonars
- Perimeter Intrusion Detectors

### SPOT ADVANTAGES

- Reduces planning costs by providing real-time, virtual analysis of sensor placement
- Utilizes standard GIS formats for elevation and imagery
- Optimizes the placement of sensors from any manufacturer's suite of products



Persistent Sentinel LLC  
11640 Arbor Street, Suite 201  
Omaha, NE 68144  
www.p-sent.com

info@p-sent.com  
+1.402.505.7900

Copyright © 2014 Persistent Sentinel. All rights reserved. SPOT™ is a registered trademark of Persistent Sentinel™. Any other product or service name may be trademarks or service marks of their respective owners.